

GOAL 3: Building World-Class Academic Programs and Research Capacity

Objective 4: Attract and retain highly qualified graduate teaching and research assistants by creating new graduate assistant positions and by providing graduate assistants with tuition waivers and competitive salaries by discipline.

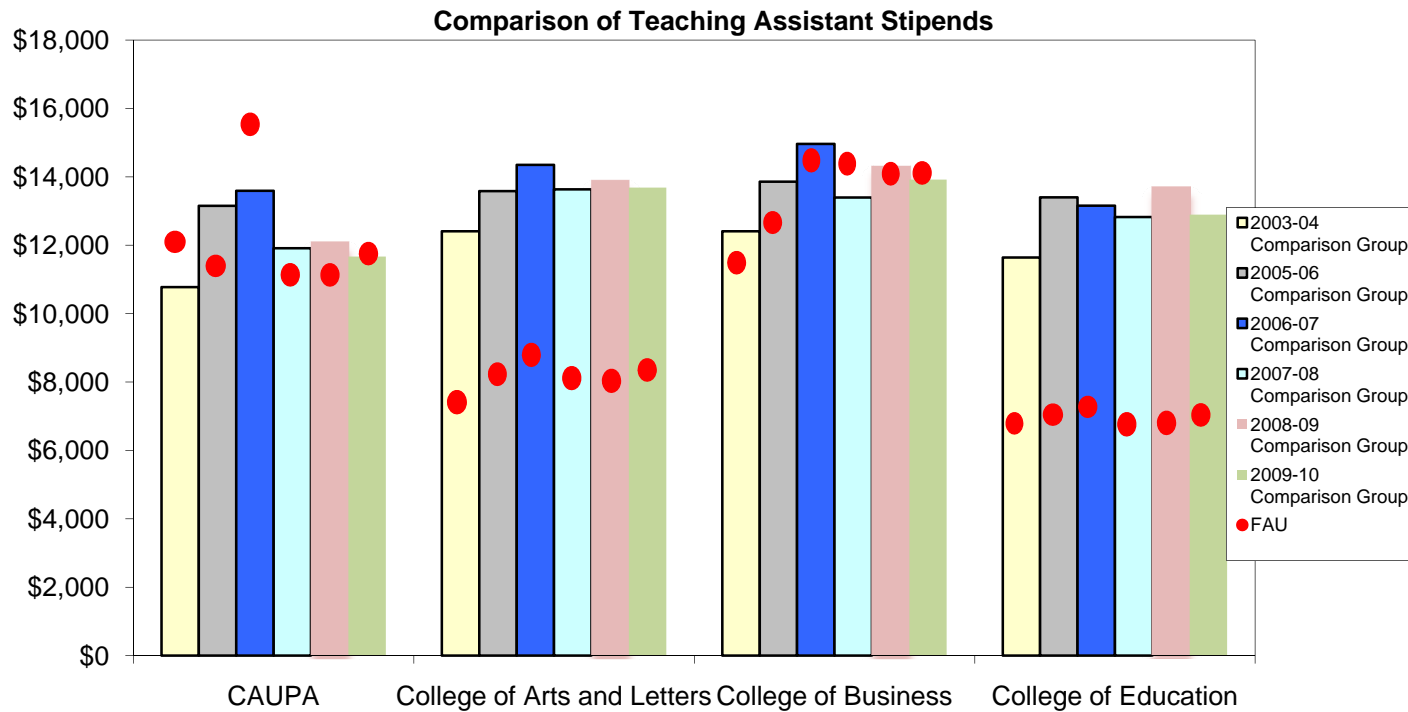
Outcome:

Graduate assistant salaries by discipline will be equivalent to 100% of the average reported by Oklahoma State University annual survey and report.

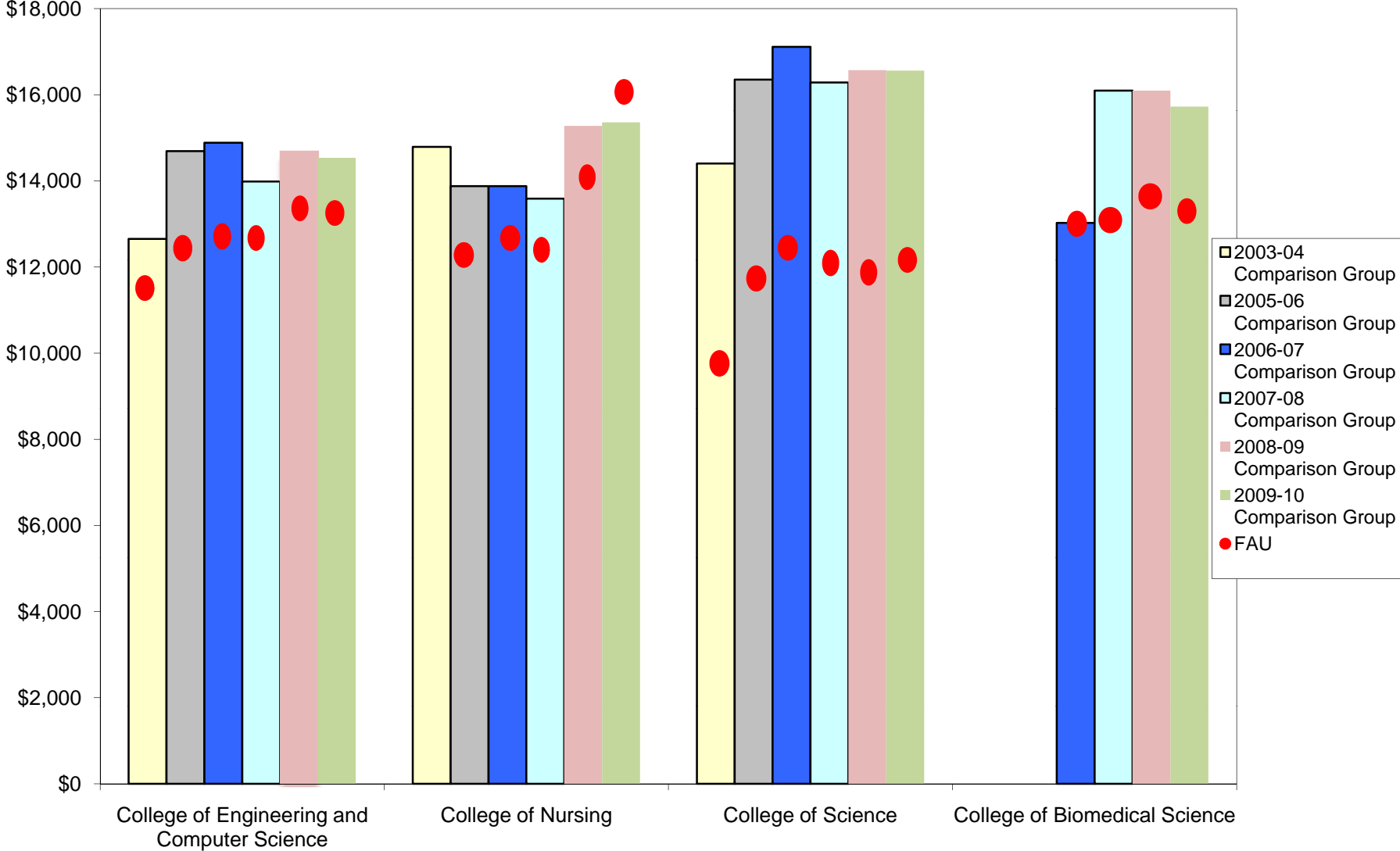
At least 70 new graduate assistant positions will be available.

Full tuition waivers will be available for all qualified graduate assistants each year.

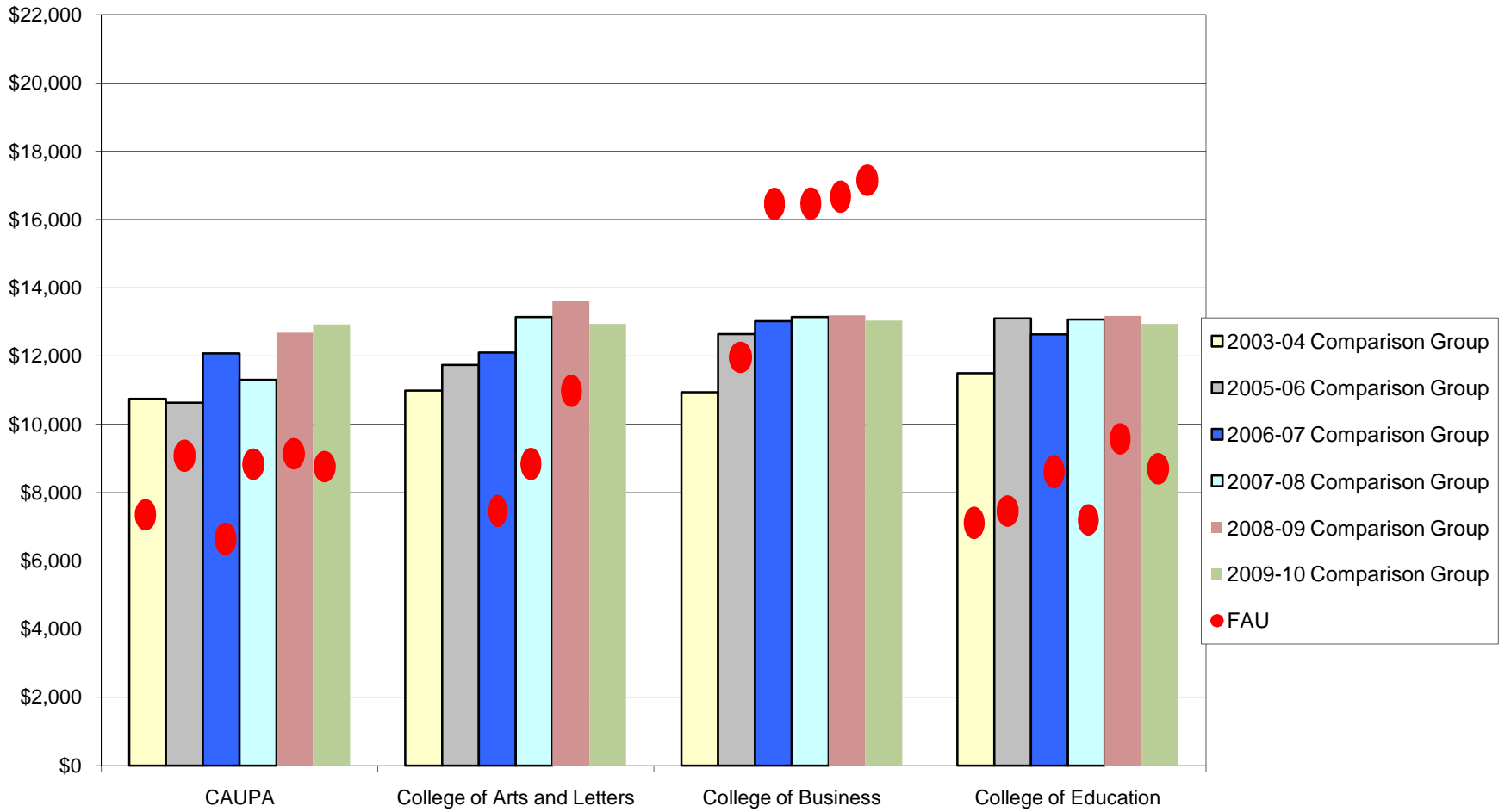
Progress toward objective:



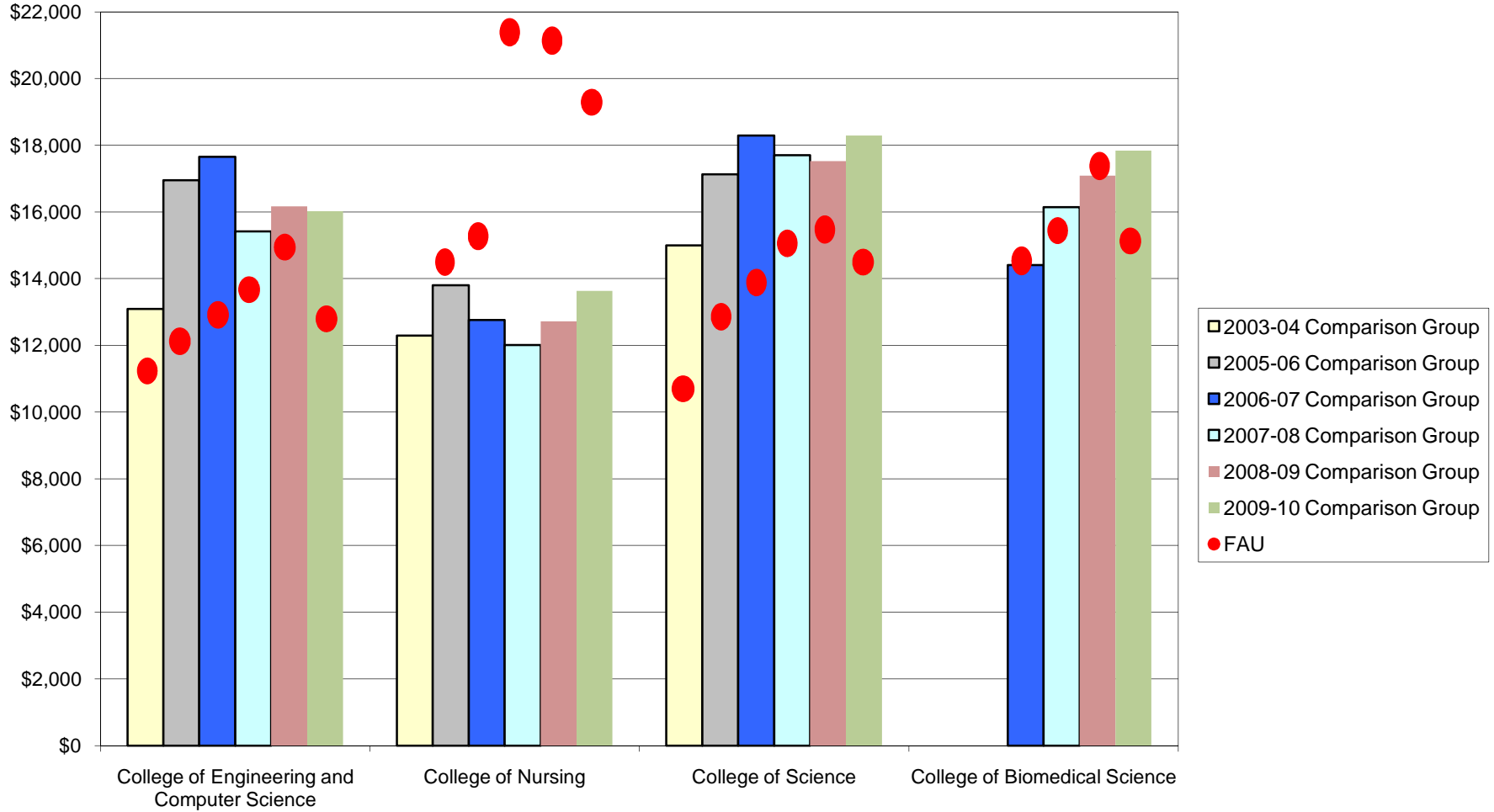
Comparison of Teaching Assistant Stipends



Comparison of Research Assistant Stipends



Comparison of Research Assistant Stipends



2009-10

Graduate Assistant Stipend Comparison

College of Architecture, Urban and Public Affairs

FAU Department	Comparison CIP Code	Assistantship Type	2009-10 FAU		Comparison Group		1.00 = Parity with Comparison Group
			Average Stipend	N	Average Stipend	N	
Architecture	4.0201 Architecture	Teaching			\$11,796	267	
		Research			\$11,729	70	
Urban & Regional Planning	4.0301 City, Urban, Community & Regional Planning	Teaching			\$10,697	78	
		Research	\$11,443	23	\$11,964	52	0.96
Public Administration	44.0401 Public Administration	Teaching	\$12,000	11	\$13,434	30	0.89
		Research			\$13,198	36	
Social Work	44.0701 Social Work	Teaching			\$11,902	129	
		Research	\$5,718	14	\$12,008	99	0.48
Criminology and Criminal Justice	43.0104 Criminal Justice/Safety Studies	Teaching			\$10,459	33	
		Research			\$19,197	34	

Data from the following institutions were used to calculate comparison statistics: Arizona State University, Auburn University (AL), Bowling Green State University (OH), Catholic University of America (DC), Central Michigan University, Clemson University (SC), Florida Atlantic University, Florida State University, Kent State University (OH), Louisiana State University, Montana State University, New Mexico State University, North Carolina State University at Raleigh, Oklahoma State University, Pennsylvania State University, Portland State University (OR), Southern Illinois University at Carbondale, Texas Tech University, University of Alabama, University of Idaho, University of Iowa, University of Montana, University of Nebraska at Lincoln, University of Nevada at Reno, University of New Mexico, University of North Dakota, University of North Texas, University of Oklahoma, University of Oregon, University of South Dakota, University of Tennessee at Knoxville, University of Texas at Austin, University of Utah, University of Wyoming, Utah State University, Washington State University, Wayne State University (MI), West Virginia University

**2009-10
Graduate Assistant Stipend Comparison**

College of Arts & Letters

FAU Department	Comparison CIP Code	Rank	2009-10 FAU		Comparison Group		1.00 = Parity with Comparison Group
			Average Stipend	N	Average Stipend	N	
Anthropology	45.0201 Anthropology	Teaching	\$8,000	12	\$14,664	311	0.55
		Research			\$13,515	80	
Women's Studies	5.0207 Women's Studies	Teaching	\$8,000	2	\$15,452	36	0.52
		Research			\$12,212	4	
Communications	09 Communications	Teaching	\$8,000	13	\$14,096	765	0.57
		Research			\$12,877	140	
English	23.0101 English	Teaching	\$9,407	55	\$14,788	1,842	0.64
		Research			\$14,857	106	
Languages, Linguistics & Comparative Literature	16.0102 Foreign Languages & Literatures	Teaching	\$8,575	20	\$14,982	132	0.57
		Research			\$16,586	14	
History	54.0101 History	Teaching	\$8,000	12	\$14,397	562	0.56
		Research			\$13,479	116	
Political Science	45.1001 Political Science	Teaching	\$8,470	9	\$15,141	371	0.56
		Research			\$13,074	148	
Sociology	45.1101 Sociology	Teaching	\$8,000	13	\$14,848	459	0.54
		Research			\$14,149	76	
Theatre	50.0501 Dramatic Arts	Teaching	\$8,500	14	\$11,400	252	0.75
		Research			\$8,756	61	
Art	50.0701 Visual Art & Studio/Fine Art	Teaching	\$8,186	11	\$10,423	434	0.79
		Research			\$14,136	39	
Music	50.09 Music	Teaching	\$8,734	19	\$11,540	1,100	0.76
		Research			\$10,890	125	
Comparative Studies		Teaching	\$12,000	13			
		Research					

Data from the following institutions were used to calculate comparison statistics: Arizona State University, Auburn University (AL), Bowling Green State University (OH), Catholic University of America (DC), Central Michigan University, Clemson University (SC), Florida Atlantic University, Florida State University, Kent State University (OH), Louisiana State University, Montana State University, New Mexico State University, North Carolina State University at Raleigh, Oklahoma State University, Pennsylvania State University, Portland State University (OR), Southern Illinois University at Carbondale, Texas Tech University, University of Alabama, University of Idaho, University of Iowa, University of Montana, University of Nebraska at Lincoln, University of Nevada at Reno, University of New Mexico, University of North Dakota, University of North Texas, University of Oklahoma, University of Oregon, University of South Dakota, University of Tennessee at Knoxville, University of Texas at Austin, University of Utah, University of Wyoming, Utah State University, Washington State University, Wayne State University (MI), West Virginia University

**2009-10
Graduate Assistant Stipend Comparison**

College of Biomedical Science

FAU Department	Comparison CIP Code	Rank	2009-10 FAU		Comparison Group		1.00 = Parity with Comparison Group
			Average Stipend	N	Average Stipend	N	
Basic Biomedical Science	26.0100, Biology, General	Teaching	13,075	1	\$15,724	1,321	0.83
		Research	\$15,284	12	\$17,838	514	0.86

Data from the following institutions were used to calculate comparison statistics: Arizona State University, Auburn University (AL), Bowling Green State University (OH), Catholic University of America (DC), Central Michigan University, Clemson University (SC), Florida Atlantic University, Florida State University, Kent State University (OH), Louisiana State University, Montana State University, New Mexico State University, North Carolina State University at Raleigh, Oklahoma State University, Pennsylvania State University, Portland State University (OR), Southern Illinois University at Carbondale, Texas Tech University, University of Alabama, University of Idaho, University of Iowa, University of Montana, University of Nebraska at Lincoln, University of Nevada at Reno, University of New Mexico, University of North Dakota, University of North Texas, University of Oklahoma, University of Oregon, University of South Dakota, University of Tennessee at Knoxville, University of Texas at Austin, University of Utah, University of Wyoming, Utah State University, Washington State University, Wayne State University (MI), West Virginia University

2009-10
Graduate Assistant Stipend Comparison
College of Business

FAU Department	Comparison CIP Code	Rank	2009-10 FAU		Comparison Group		1.00 = Parity with Comparison Group
			Average Stipend	N	Average Stipend	N	
Accounting	52.0301 Accounting	Teaching	\$18,000	10	\$12,043	382	1.49
		Research	\$15,828	3	\$12,607	102	1.26
Economics	45.0601 Economics	Teaching	\$6,000	4	\$17,047	380	0.35
		Research			\$15,454	101	
Finance	52.0801 Finance	Teaching	\$18,000	7	\$14,179	118	1.27
		Research	\$18,000	3	\$12,211	60	1.47
Management Programs	52.0201 Business Administration & Management	Teaching	\$14,220	6	\$12,264	239	1.16
		Research	\$18,000	5	\$12,936	127	1.39
Marketing	52.1401 Marketing Management	Teaching	\$16,566	6	\$13,550	142	1.22
		Research	\$18,000	1	\$12,206	50	1.47
Information Technology & Operations Management	52.1201 Management Information Systems	Teaching	\$10,440	6	\$12,666	41	0.82
		Research			\$9,508	27	

Data from the following institutions were used to calculate comparison statistics: Arizona State University, Auburn University (AL), Bowling Green State University (OH), Catholic University of America (DC), Central Michigan University, Clemson University (SC), Florida Atlantic University, Florida State University, Kent State University (OH), Louisiana State University, Montana State University, New Mexico State University, North Carolina State University at Raleigh, Oklahoma State University, Pennsylvania State University, Portland State University (OR), Southern Illinois University at Carbondale, Texas Tech University, University of Alabama, University of Idaho, University of Iowa, University of Montana, University of Nebraska at Lincoln, University of Nevada at Reno, University of New Mexico, University of North Dakota, University of North Texas, University of Oklahoma, University of Oregon, University of South Dakota, University of Tennessee at Knoxville, University of Texas at Austin, University of Utah, University of Wyoming, Utah State University, Washington State University, Wayne State University (MI), West Virginia University

**2009-10
Graduate Assistant Stipend Comparison**

College of Education

FAU Department	Comparison CIP Code	Rank	2009-10 FAU		Comparison Group		1.00 = Parity with Comparison Group
			Average Stipend	N	Average Stipend	N	
Counselor Education	13.1101 Counselor Education/School Counseling & Guidance Services	Teaching			\$12,501	58	
		Research	\$10,000	6	\$16,640	38	0.60
Educational Leadership	13.0401 Educational Administration & Leadership	Teaching	\$8,750	3	\$12,252	73	
		Research	\$8,750	3	\$12,843	194	0.68
Exercise Science & Health Promotion	31.0505 Exercise Science, Physiology, Movement Studies	Teaching	\$7,500	15	\$13,048	235	0.57
		Research			\$16,615	55	
Teaching & Learning	13.12 General Teacher Education	Teaching			\$12,166	73	
		Research	\$7,500	5	\$12,353	66	0.61
Exceptional Student Education	13.1001 Special Education and Teaching, General	Teaching			\$15,986	103	
		Research	\$7,500	1	\$16,391	64	0.46
Communication Sciences & Disorders	51.0204 Speech Pathology & Audiology	Teaching			\$9,961	79	
		Research	\$7,500	1	\$10,132	97	0.74
Curriculum, Culture, & Educational Inquiry	13.0301 Curriculum & Instruction	Teaching			\$12,899	239	
		Research	\$7,500	4	\$11,457	157	0.65

Data from the following institutions were used to calculate comparison statistics: Arizona State University, Auburn University (AL), Bowling Green State University (OH), Catholic University of America (DC), Central Michigan University, Clemson University (SC), Florida Atlantic University, Florida State University, Kent State University (OH), Louisiana State University, Montana State University, New Mexico State University, North Carolina State University at Raleigh, Oklahoma State University, Pennsylvania State University, Portland State University (OR), Southern Illinois University at Carbondale, Texas Tech University, University of Alabama, University of Idaho, University of Iowa, University of Montana, University of Nebraska at Lincoln, University of Nevada at Reno, University of New Mexico, University of North Dakota, University of North Texas, University of Oklahoma, University of Oregon, University of South Dakota, University of Tennessee at Knoxville, University of Texas at Austin, University of Utah, University of Wyoming, Utah State University, Washington State University, Wayne State University (MI), West Virginia University

**2009-10
Graduate Assistant Stipend Comparison**

College of Engineering and Computer Science

FAU Department	Comparison CIP Code	Rank	2009-10 FAU		Comparison Group		1.00 = Parity with Comparison Group
			Average Stipend	N	Average Stipend	N	
Civil, Environmental & Geomatics Engineering	14.0801 Civil Engineering	Teaching	\$ 13,309	7	\$14,461	328	0.92
		Research	\$ 13,125	10	\$16,319	723	0.80
Computer Science & Engineering	11.0701 Computer Science	Teaching	\$ 14,021	18	\$14,190	252	0.99
		Research	\$ 13,374	24	\$17,207	306	0.78
Electrical Engineering	14.1001 Electrical, Electronics & Communications Engineering	Teaching	\$ 14,797	10	\$14,602	733	1.01
		Research	\$ 13,688	4	\$15,667	1,165	0.87
Ocean & Mechanical Engineering	14.1901 Mechanical Engineering	Teaching	\$ 16,500	2	\$14,614	636	1.13
		Research	\$ 12,887	7	\$15,853	951	0.81
Ocean & Mechanical Engineering	14.2401 Ocean/Coastal Engineering	Teaching	\$ 13,259	5			
		Research	\$ 13,062	48			

Data from the following institutions were used to calculate comparison statistics: Arizona State University, Auburn University (AL), Bowling Green State University (OH), Catholic University of America (DC), Central Michigan University, Clemson University (SC), Florida Atlantic University, Florida State University, Kent State University (OH), Louisiana State University, Montana State University, New Mexico State University, North Carolina State University at Raleigh, Oklahoma State University, Pennsylvania State University, Portland State University (OR), Southern Illinois University at Carbondale, Texas Tech University, University of Alabama, University of Idaho, University of Iowa, University of Montana, University of Nebraska at Lincoln, University of Nevada at Reno, University of New Mexico, University of North Dakota, University of North Texas, University of Oklahoma, University of Oregon, University of South Dakota, University of Tennessee at Knoxville, University of Texas at Austin, University of Utah, University of Wyoming, Utah State University, Washington State University, Wayne State University (MI), West Virginia University

College of Nursing

FAU Department	Comparison CIP Code	Rank	2009-10 FAU		Comparison Group		1.00 = Parity with Comparison Group
			Average Stipend	N	Average Stipend	N	
Nursing	51.1601 Nursing	Teaching	\$17,700	9	\$15,360	105	1.15
		Research	\$19,500	4	\$13,636	66	1.43

Data from the following institutions were used to calculate comparison statistics: Arizona State University, Auburn University (AL), Bowling Green State University (OH), Catholic University of America (DC), Central Michigan University, Clemson University (SC), Florida Atlantic University, Florida State University, Kent State University (OH), Louisiana State University, Montana State University, New Mexico State University, North Carolina State University at Raleigh, Oklahoma State University, Pennsylvania State University, Portland State University (OR), Southern Illinois University at Carbondale, Texas Tech University, University of Alabama, University of Idaho, University of Iowa, University of Montana, University of Nebraska at Lincoln, University of Nevada at Reno, University of New Mexico, University of North Dakota, University of North Texas, University of Oklahoma, University of Oregon, University of South Dakota, University of Tennessee at Knoxville, University of Texas at Austin, University of Utah, University of Wyoming, Utah State University, Washington State University, Wayne State University (MI), West Virginia University

**2009-10
Graduate Assistant Stipend Comparison**

College of Science

FAU Department	Comparison CIP Code	Rank	2009-10 FAU		Comparison Group		1.00 = Parity with Comparison Group
			Average Stipend	N	Average Stipend	N	
Biological Sciences	26.0101 General Biology	Teaching	\$12,343	84	\$15,974	1,164	0.77
		Research	\$12,343	14	\$17,958	483	0.69
Environmental Sciences	26.13 Ecology, Evolution, Systematics, & Population Biology	Teaching	\$9,636	5	\$17,232	43	0.56
		Research			\$15,692	69	
Chemistry	40.0501 Chemistry	Teaching	\$12,075	38	\$17,310	1,487	0.70
		Research	\$17,525	10	\$19,840	985	0.88
Psychology	42.0101 General Psychology	Teaching	\$12,343	40	\$14,295	943	0.86
		Research	\$15,525	3	\$14,841	532	1.05
Complex Systems	42.0801 Experimental Psychology	Teaching	\$15,050	13	\$13,361	21	1.13
		Research	\$15,050	2	\$10,075	4	1.49
Geosciences ¹ Geography	45.0701 Geography	Teaching	\$12,525	6	\$14,435	287	0.87
		Research	\$15,050	2	\$17,288	101	0.87
Geosciences ¹ Geology	40.0601 Geology	Teaching	\$12,525	6	\$15,786	506	0.79
		Research	\$10,000	1	\$18,354	346	0.54
Mathematical Sciences	27.0101 Mathematics	Teaching	\$13,050	45	\$17,840	1,418	0.73
		Research	\$13,050	2	\$18,406	157	0.71
Physics	40.0801 Physics	Teaching	\$15,050	23	\$17,529	958	0.86
		Research	\$15,050	1	\$19,251	788	0.78

Data from the following institutions were used to calculate comparison statistics: Arizona State University, Auburn University (AL), Bowling Green State University (OH), Catholic University of America (DC), Central Michigan University, Clemson University (SC), Florida Atlantic University, Florida State University, Kent State University (OH), Louisiana State University, Montana State University, New Mexico State University, North Carolina State University at Raleigh, Oklahoma State University, Pennsylvania State University, Portland State University (OR), Southern Illinois University at Carbondale, Texas Tech University, University of Alabama, University of Idaho, University of Iowa, University of Montana, University of Nebraska at Lincoln, University of Nevada at Reno, University of New Mexico, University of North Dakota, University of North Texas, University of Oklahoma, University of Oregon, University of South Dakota, University of Tennessee at Knoxville, University of Texas at Austin, University of Utah, University of Wyoming, Utah State University, Washington State University, Wayne State University (MI), West Virginia University